

Summertime

from PORGY AND BESS®

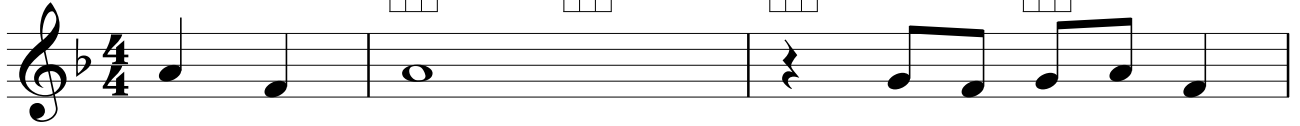
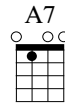
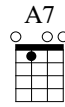
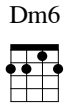
Music and Lyrics by George Gershwin, DuBose and Dorothy Heyward and Ira Gershwin

First note



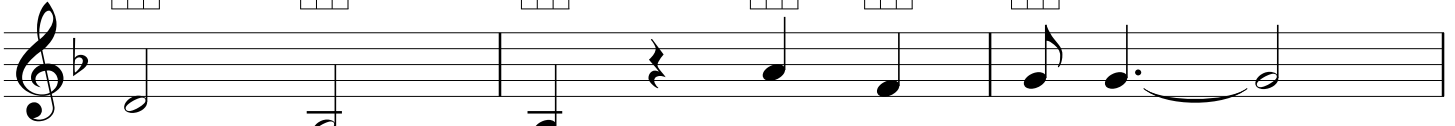
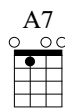
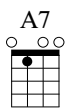
Verse

Moderately, with expression (♩ = ♩³)



1. Sum - mer - time

an' the liv - in' is

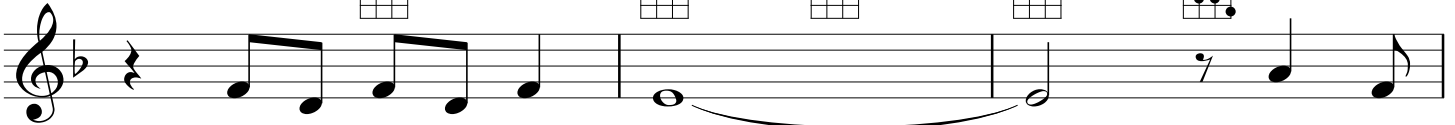
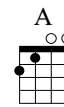
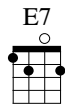
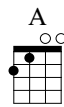
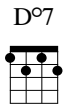


eas -

y.

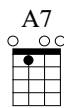
Fish are

jump - in' _____



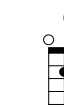
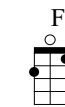
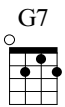
an' the cot - ton is high. _____

Oh, yo'



dad - dy's rich _____

an' yo' ma is good - look - in' _____



So hush, lit - tle ba - by, don' _____ yo'

© 1935 (Renewed) NOKAWI MUSIC, FRANKIE G. SONGS, DUBOSE AND DOROTHY HEYWARD MEMORIAL FUND and IRA GERSHWIN MUSIC
All Rights for NOKAWI MUSIC Administered by IMAGEM SOUNDS
All Rights for IRA GERSHWIN MUSIC Administered by WB MUSIC CORP.
All Rights Reserved Used by Permission

Dm A7#5 Dm6 A7 G7 A7#5

cry. _____ 2. One of these

Verse
Dm6 A7 Dm6 A7 Dm6 A7

morn - in's, you goin' to rise ___ up sing - in'. _____

Dm6 A7 Dm6 Gm7 D°7

Then you'll spread yo' wings ___ an' you'll take ___ the

A E7 A Eb7b5 Dm6 A7

sky. _____ But till that morn - in', _____

Dm6 A7 Dm6 A7 Dm G7

there's - a noth - in' can harm you, _____ with

F Dm G Gm7 Dm

Dad - dy an' Mam - my stand - in' by. _____