

Words by BILLY ROSE  
and E.Y. "Yip" HARBURG

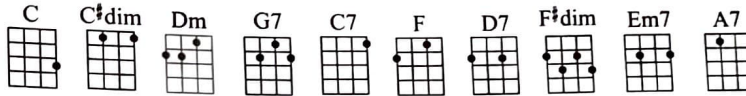
# It's Only A Paper Moon

Music by  
HAROLD ARLEN

FIRST NOTE



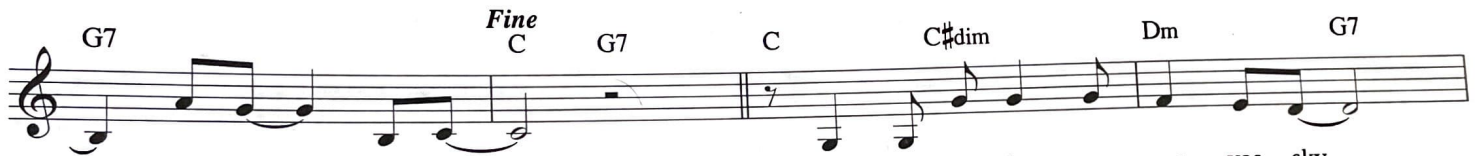
Moderately  
C



1. Say, it's on - ly a pa - per moon — sail - ing o - ver a  
2. It's a Bar - num and Bai - ley world, — just as phon - y as



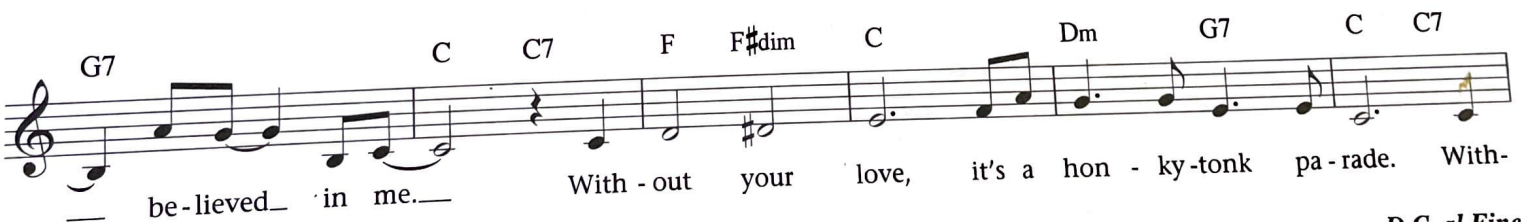
card - board sea, — but it would - n't be make - be - lieve — if you —  
it can be, — but it would - n't be make - be - lieve — if you —



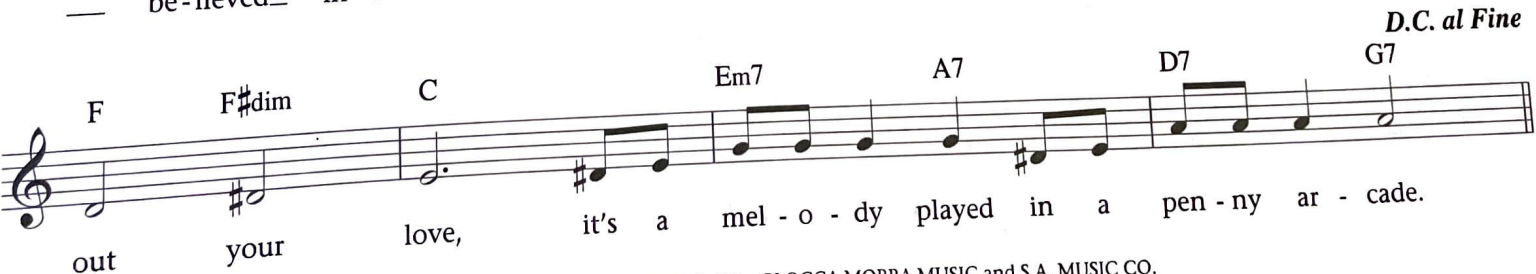
— be - lieved in me. — Yes, it's on - ly a can - vas sky —  
— be - lieved in me. —



hang - ing o - ver a mus - lin tree, — but it would - n't be make - be - lieve, — if you —



— be - lieved — in me. — With - out your love, it's a hon - ky - tonk pa - rade. With -



out your love, it's a mel - o - dy played in a pen - ny ar - cade.

© 1933 (Renewed) CHAPPELL & CO., GLOCCA MORRA MUSIC and S.A. MUSIC CO.  
All Rights for GLOCCA MORRA MUSIC Administered by NEXT DECADE ENTERTAINMENT, INC.

